

Windows Setup

Note Do not insert the applications disc yet. You will need to pair the device successfully first.





1 Turn on the headset. The blue LED will turn on. **You can pair the device at anytime.**

2 For **WINDOWS 10:**

a Click **Settings**

b Click **Devices**

c Click **Bluetooth**

d Select **MindWave Mobile** and click **Pair**. If you see multiple devices named **MindWave Mobile**,     select the option with a headset icon.

e If it requires a pass key, please enter **0000**

For **WINDOWS 8 & 8.1:**

a Click **Settings, Control Panel** then

b Click **Add Device**

c Select **MindWave Mobile** and click **Next**

d It may take several minutes to install necessary files on your system

e If it requires a pass key, please enter **0000**

For **WINDOWS 7:**

a Click **Start**, then **Control Panel**

b Click **Add Device**

c Select **MindWave Mobile** click **Next**

d Click **Close** to complete pairing

e If it requires a pass key, please enter **0000**

For **WINDOWS XP:**

a Click **Start**, then **Control Panel**

b Click **Bluetooth Devices**

c Select **Devices** click **Add**

d Check **"My device is setup and ready to be found"**

e Select **MindWave Mobile** and click **Next**


f Select **"Let me choose my own pass key"**, enter **0000**

g Click **Finish** to complete pairing

3 Once the headset is paired, visit mindwavemobile.neurosky.com/tutorial. QR code on page one.

4 Follow the on-screen guide to download, install and run the **"MindWave Mobile+ Tutorial"** app to further configure your headset.

5 You may now insert the application disc and install your apps. If you don't have a disc drive you can download your apps from mindwavemobileplus.neurosky.com. QR code on page one.

 **Travel Note for ALL PLATFORMS** *MindWave Mobile is sensitive to different electrical standards used in other countries. If you travel to another country, visit mindwavemobile.neurosky.com/tutorial to reconfigure.*

Quick Start Guide

mindwave
MOBILE



View the MindWave Mobile+ Tutorial and configuration tools here:
mindwavemobile.neurosky.com/tutorial

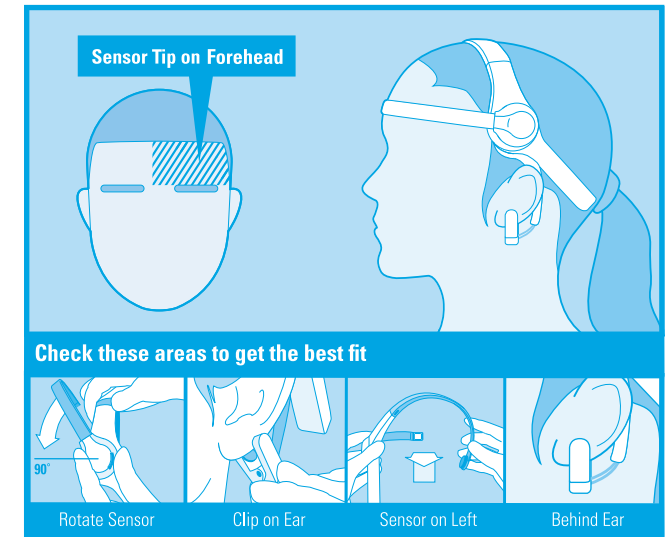
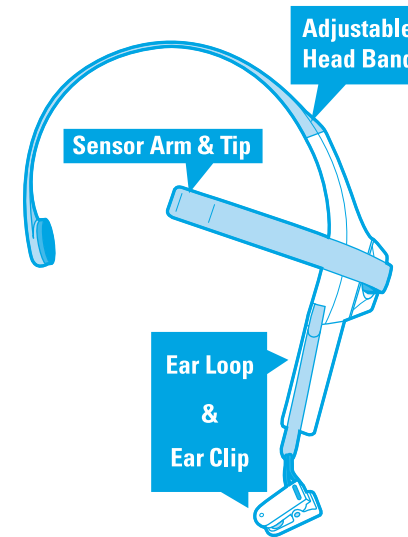


If you don't have a disc drive, you can download the disc contents here:
mindwavemobileplus.neurosky.com

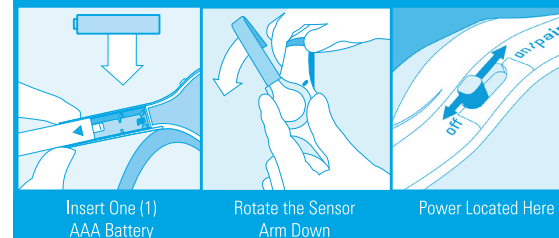
MindWave Mobile Headset Basics

How to Wear the MindWave Headset The headset should rest on the head as shown with the sensor tip touching the forehead, the ear loop behind the ear and the clip attached.

The Headset



Before You Start



off  on /pair off  on /pair

Headset will be **OFF**
The LED will be **OFF**



Headset will be **ON**

When the headset is powered on the LED will **light up blue**.

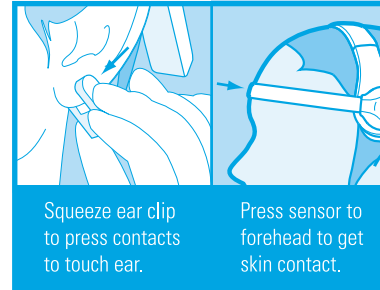
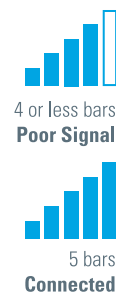
You can pair the headset at any time while it is powered on.

Signal Status & Meters

Signal Status To operate the MindWave with your device you will need to achieve *Bluetooth* pairing with the device first and also get a good EEG signal with the MindWave. These icons show the status of your connection in the upper right hand corner of most NeuroSky apps.



Quick Fixes & Older Icons If your device is properly paired and there is a fresh battery in the headset, try these tips to help ensure good EEG connection. Older applications may use the signal status icons below.



eSense Meters The meters are gauges of certain mental states that the MindWave can detect. You can try to control them to cause action in an app, or the app can react to how you happen to be feeling in the moment.



Attention / Focus

- Identify and maintain a single thought
- Stare at a specific object
- Focus on something you like
- Calculate math
- Listen intently to someone talking



Meditation / Relaxation

- Take a deep breath and slowly exhale
- Deliberately relax all muscles
- Clear mind of any specific thoughts
- Let mind wander and drift
- Close eyes



Blink

- Blink eyes as naturally as possible
- You may need to blink harder or softer to control certain things

iOS Setup

- 1 Turn on the headset. The **blue LED** will turn on.
- 2 Visit mindwavemobile.neurosky.com/tutorial. You can use the QR code on the first page of this guide to easily navigate there.
- 3 Follow the on-screen guide to download, install and run the **"MindWave Mobile+ Tutorial"** app, then follow instructions from the app to further configure your headset.
- 4 Go to the NeuroSky Store at <http://store.neurosky.com/collections/apps/ios> to download apps.

Android Setup

- 1 Turn on the headset. The blue LED will turn on. **You can pair the device at anytime.**
- 2 Refer to your Android *Bluetooth*™ pairing procedure. Select **"MindWave Mobile"** device when it appears. Enter **"0000"** as the *Bluetooth*™ authentication key if prompted.
- 3 Once the headset is paired, visit mindwavemobile.neurosky.com/tutorial. You can use the QR code on the first page of this guide to easily navigate there.
- 4 Go to the Android Market then search for **"NeuroSky"** or **"MindWave Mobile"** to download apps.

Mac OS X Setup

Note Do not insert the application disc yet. You will need to pair the device successfully and connect first. Please also ensure that you are running OS X version 10.5.8 or later with an Intel processor, and that you have **Administrator Privileges**. Please also ensure that all antivirus and firewall programs are disabled during installation.

- 1 Turn on the headset. The blue LED will turn on. **You can pair the device at anytime.**
- 2 Proceed with pairing procedure.
For **Mac OS X 10.7.5 ~ 10.8:**

a Open System Preferences	b Click Bluetooth icon	c Click on the " + " icon
d If asked to "Select Device Type" choose Any Device	e Click Passkey Options . Set to "Use a specific passkey"	f Select MindWave Mobile and click Next
g Enter 0000 if prompted for passkey	h Use the Default setting if asked about services	i Click Close to complete pairing

For **Mac OS X 10.9 ~ 10.10.4:**

a Open System Preferences	b Click Bluetooth icon	c Select MindWave Mobile
d Click Pair to complete pairing (Ensure that your Bluetooth is turned on)		

- 3 Once the headset is paired, visit mindwavemobile.neurosky.com/tutorial. QR code on page one.
**MindWave Mobile will show as "Connected" after paired in first few seconds, then turn to "Not Connected". The status will switch back to "Connected" automatically when you start a MindWave Mobile App.*
- 4 Follow the on-screen guide to download, install and run the **"MindWave Mobile+ Tutorial"** app to further configure your headset.
- 5 You may now insert the application disc and install your apps. If you don't have a disc drive you can download your apps from mindwavemobileplus.neurosky.com. QR code on page one.
**Open your disc drive folder and double-click on "Prerequisites.pkg". After Prerequisites installation is complete double-click "Setup.pkg" to begin the installation process.*